

## Industrial Production Index increases by 2.1% in December 2024

Preliminary results indicate a 2.1% increase in the Industrial Production Index (IPI) in December 2024 compared to the same month of the previous year (December 2023), supported by the rise in manufacturing activity, and water supply, sewerage and waste management and remediation activities. IPI increased by 1.3% compared to November 2024.

### Sub-index of mining and quarrying activity

In December 2024, the sub-index of mining and quarrying activity decreased by 0.4% compared to the same month of the previous year. Saudi Arabia decreased its oil production to 8.91 million barrels per day in December 2024 compared to 8.94 million barrels per day in December 2023.

On a monthly basis, the sub-index of mining and quarrying activity decreased by 0.2%.

### Sub-index of manufacturing activity

Compared to December of the previous year, the sub-index of manufacturing activity increased by 6.3%, supported by an increase in the manufacture of coke and refined petroleum products which increased by 9.3%, and the manufacture of chemicals and chemical products which increased by 4.8%.

On a monthly basis, the sub-index of manufacturing activity showed an increase of 5.1%, supported by the rise in the manufacture of coke and refined petroleum products, which increased by 13.1%, and the manufacture of chemicals and chemical products which increased by 0.6%.

Table1. Sub-activities of manufacturing industry

Economic Activity ISIC4	Index			Change	
	Dec-24	Nov -24	Dec -23	Annual	Monthly
Manufacture of coke and refined petroleum products	103.7	91.7	94.9	9.3%	13.1%
Manufacture of chemicals and chemical products	113.0	112.3	107.8	4.8%	0.6%
Manufacture of food products	122.4	114.9	112.5	8.8%	6.5%
Manufacture of non-metallic products	128.0	127.3	126.3	1.4%	0.5%
Manufacture of basic metals	123.3	123.1	117.1	5.3%	0.2%
Manufacture of beverages	139.3	138.3	136.1	2.4%	0.7%
Manufacture of paper and paper products	143.7	142.0	132.2	8.7%	1.2%
Manufacture of electrical devices	138.5	140.3	125.3	10.5%	-1.3%
Manufacture of furniture	98.6	96.6	92.6	6.5%	2.1%
Other Economic Activities	140.6	140.3	138.2	1.8%	0.3%

\*Preliminary data, [table](#)

### Sub-Index of electricity, gas, steam, and air conditioning supply, and sub-index of water supply, sewage, waste management, and remediation activities

The sub-index of electricity, gas, steam, and air conditioning supply activity recorded an annual decrease of 1.9%. and the sub-index of water supply, sewerage and waste management and remediation activities increased by 0.8%.

Based on the month-on-month trend, the sub-index of electricity, gas, steam, and air conditioning supply activity and the sub-index of water supply, sewerage and waste management and remediation activities decreased by 15.6% and 1.9%, respectively.

### IPI by main economic activities

In December 2024, the index of oil activities increased by 1.3% compared to the same month of the previous year. Additionally, the index of non-oil activities increased by 4.0%, supported by an increase in all non-oil economic activities except for electricity, gas, steam, and air conditioning supply activity.

Based on the month-on-month trend, the index for oil activities increased by 2.1%, and the index of non-oil activities decreased by 0.5%.

Figure1. General index and monthly growth rates

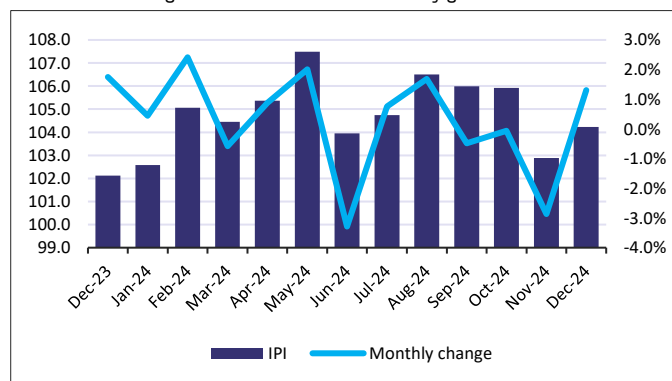


Figure2. IPI according to ISIC4

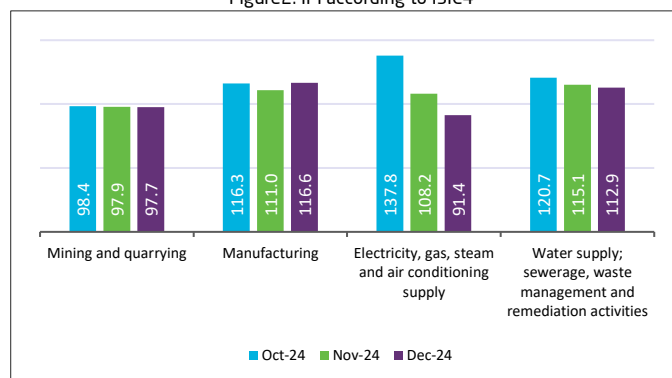


Figure3: Monthly growth rate of sub-indices according to ISIC4

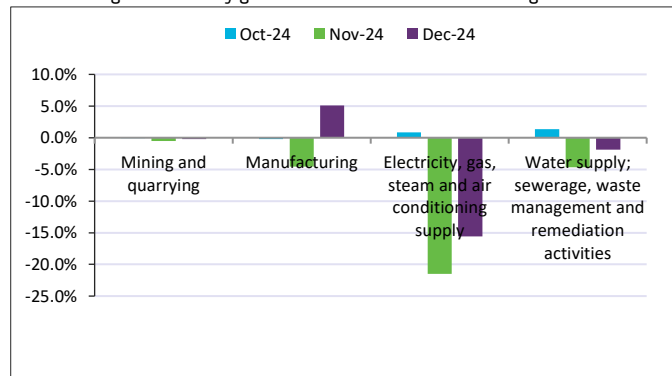
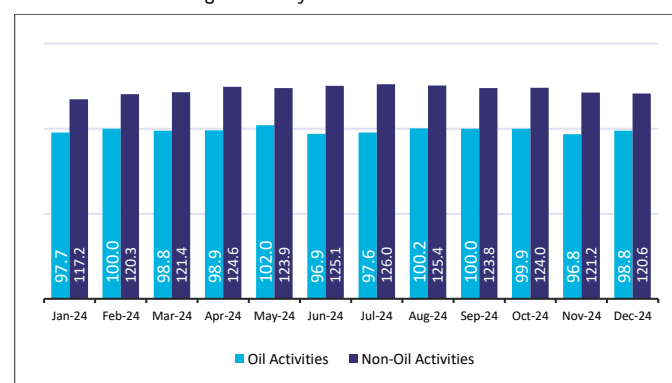


Figure4. IPI by main economic activities



### Methodology and Quality

IPI is an economic indicator that reflects the relative changes in the volume of industrial output. It is calculated based on the industrial production survey. IPI data is based on the International Standard Industrial Classification of Economic Activities (ISIC4). This index is published monthly. For more details, refer to the [Methodology and Quality report](#).